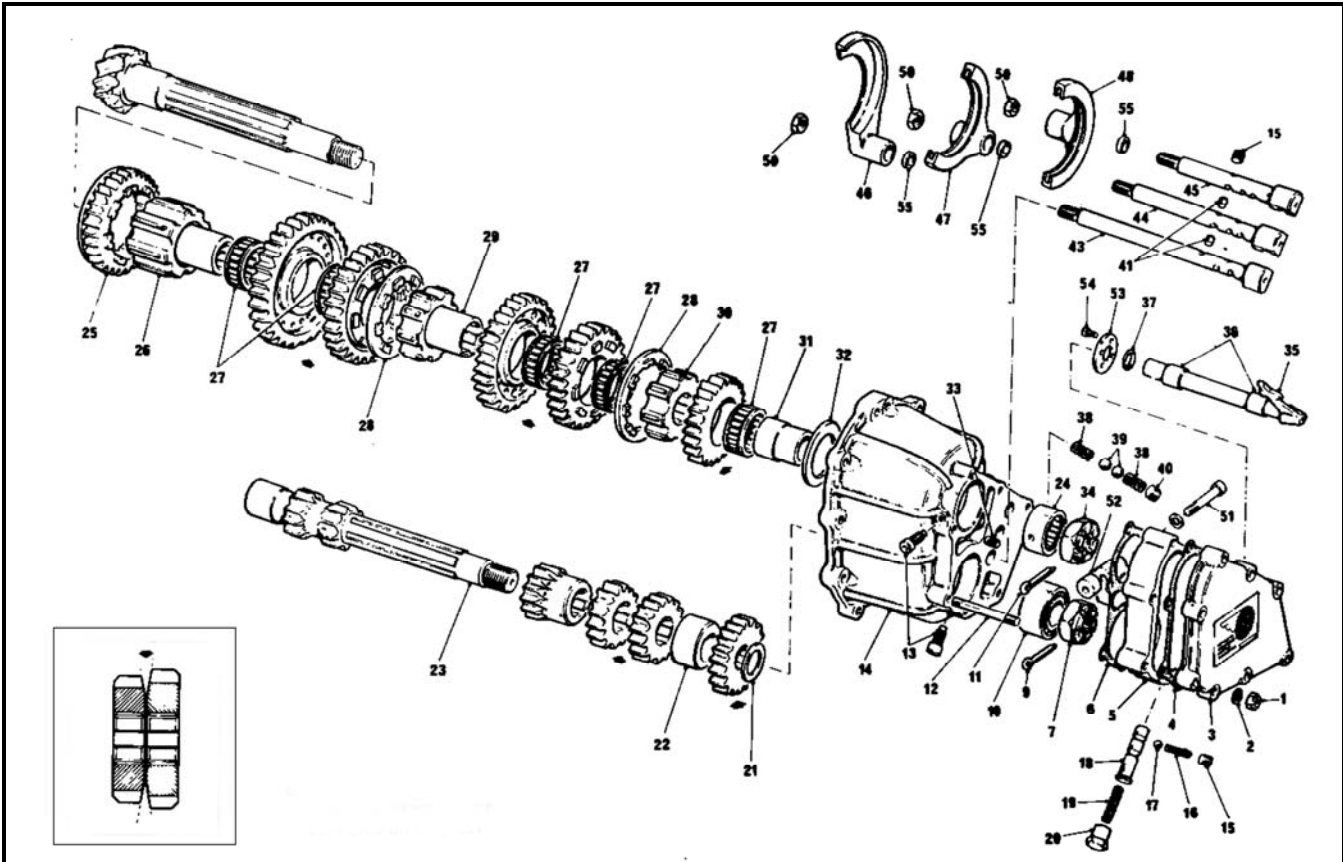


## FT200 Bearing Carrier Assembly



ITEM NUMBER	WRD NUMBER	NEWLAND NUMBER	DESCRIPTION	PRICE
1	WRD-SIN-198	HFT2013	5/16" NYLOCK	\$0.25
2	WRD-SIN-007	HFT2027	5/16" WASHER	\$0.05
3	WRD-HL-FT204	HFT204	END COVER - NO WING MOUNT	\$348.00
4	WRD-HL-FT260	HFT260	GASKET	\$11.00
5	WRD-HL-FT203	HFT203	SELECTOR FINGER HOUSING	\$1,053.00
6	WRD-HL-FT261	HFT261	GASKET	\$11.00
7	WRD-HL-FT236	HFT236	LAYSHAFT NUT	\$67.00
9	WRD-SIN-193	HFT2301	SPLIT PIN	\$0.25
10	WRD-SIN-209	HFT2343	BEARING ROLLER TYPE	\$64.00
10	WRD-SIN-210	HFT2343	LAYSAFT BEARING	\$45.00
11	WRD-SIN-193	HFT2301	SPLIT PIN	\$0.25
12	WRD-SIN-211	HFT2026	STUD	\$2.25
13A	WRD-SIN-212	HFT2293	SCREW PINION BEARING RETAINER	\$9.25
13B	WRD-SIN-213	HFT2293	SCREW LAYSHAFT BEARING RETAINER	\$9.25
14	WRD-HL-FGB202	HFG202	BEARING CARRIER LATE FT	\$2,497.00
15	WRD-WEB-053	HFT2028	PLUG - WEBSTER	\$1.67
16	WRD-SIN-214	HFT2034	SPRING 1ST/REV LOCKOUT	\$8.00
17	WRD-SIN-215	HFT2033	BALL 1ST/REV LOCKOUT	\$0.50
18	WRD-HL-FT2030	HFT2030	PLUNGER	\$73.00
19	WRD-SIN-045	HFT2032	SPRING	\$8.00
20	WRD-WEB-003	HFT2035	PLUG - WEBSTER	\$13.33



**To Order Please Call - 1 858 578 1044 or Cell - 1 858 220 0927**  
**Fax - 1 858 578 4101, E-mail : sales@willrace.com**  
**Prices subject to change without notice**

21	WRD-HL-FT2345	HFT2345	THRUST WASHER	\$82.00
21B	WRD-HL-FGC2345	HFGC2345	THRUST WASHER	\$85.00
22	WRD-HL-FT2346	HFT2346	SPACER	\$52.00
23			LAYSHAFT 1ST GEAR	PAGE 37
24	WRD-SIN-195	HFT2291	BEARING	\$76.00
25	WRD-HL-FT231HB	HFT231HB	1ST REVERSE SLIDER	\$342.00
26	WRD-HL-FT226	HFT226	FRONT HUB	\$421.00
27	WRD-SIN-216	HFT2261	BEARING	\$17.38
28	WRD-HL-FT232	HFT232	CLUTCH RING FT 2.5"	\$252.00
28	WRD-HL-DG232	HDG232	CLUTCH RING FG/FGA 2.35"	\$258.00
28	WRD-WEB-054	HDG232	CLUTCH RING FG/FGA 2.35" - WEBSTER	\$178.34
28			CLUTCH RING FT 2.5" - CMW MANUFACTURE	\$137.50
28			CLUTCH RING FG/FGA 2.35" - CMW MANUFACTURE	\$137.50
29	WRD-HL-FG227	HFG227	HUB CENTRE - 2.35"	\$409.00
30	WRD-HL-FG228	HFG228	HUB REAR - 2.35"	\$403.00
31	WRD-HL-FT229	HFT229	INNER TRACK 5TH GEAR	\$111.00
32	WRD-HL-FT2294	HFT2294	WASHER	\$96.00
32A	WRD-HL-FT229T	HFT229T	INNER TRACK, USE WITH HFGB202,	\$128.00
33	WRD-SIN-217	HFT2025	STUD	\$3.00
34	WRD-SIN-218	HFT230	NUT	\$67.00
35	WRD-HL-FT252	HFT252	SELECTOR FINGER	\$221.00
36	WRD-SIN-061	HFT2036	BUSHING	\$6.00
37	WRD-SIN-219	HFT2037	"O" RING	\$0.75
37	WRD-SIN-171	HFT2037S	OIL SEAL, LATE FT BOX	\$4.00
38	WRD-SIN-057	HFT2022	SPRING	\$1.50
39	WRD-SIN-058	HFT2021	STEEL BALL	\$0.50
40	WRD-SIN-059	HFT2023	PLUG	\$1.50
41	WRD-HL-FT2024	HFT2024	INTERLOCK	\$29.00
43	WRD-HL-FT246	HFT246	SELECTOR ROD, 1ST/REVERSE	\$270.00
44	WRD-HL-FT247	HFT247	SELECTOR ROD 2ND/3RD	\$267.00
45	WRD-HL-FT248	HFT248	SELECTOR ROD 4TH/5TH	\$270.00
46	WRD-HL-FGB229	HFGB229	INNER TRACK 5TH GEAR.	\$186.00
47	WRD-HL-FT250	HFT250	SELECTOR FORK 2ND/3RD	\$334.00
48	WRD-HL-FT251	HFT251	SELECTOR FORK 4TH/5TH	\$334.00
50	WRD-SIN-219	HFT2462	NUT	\$1.50
51	WRD-SIN-220	HFT20311	SCREW	\$2.00
52	WRD-HL-FT20310	HFT20310	SPACER	\$14.00
53	WRD-HL-FT2038	HFT2038	RETAINER PLATE	\$19.00
54	WRD-SIN-221	HFT2039	SCREW	\$0.25
55	WRD-SIN-172	HFT2463	SPACER, SEL FORK (VARIOUS)	\$1.50